



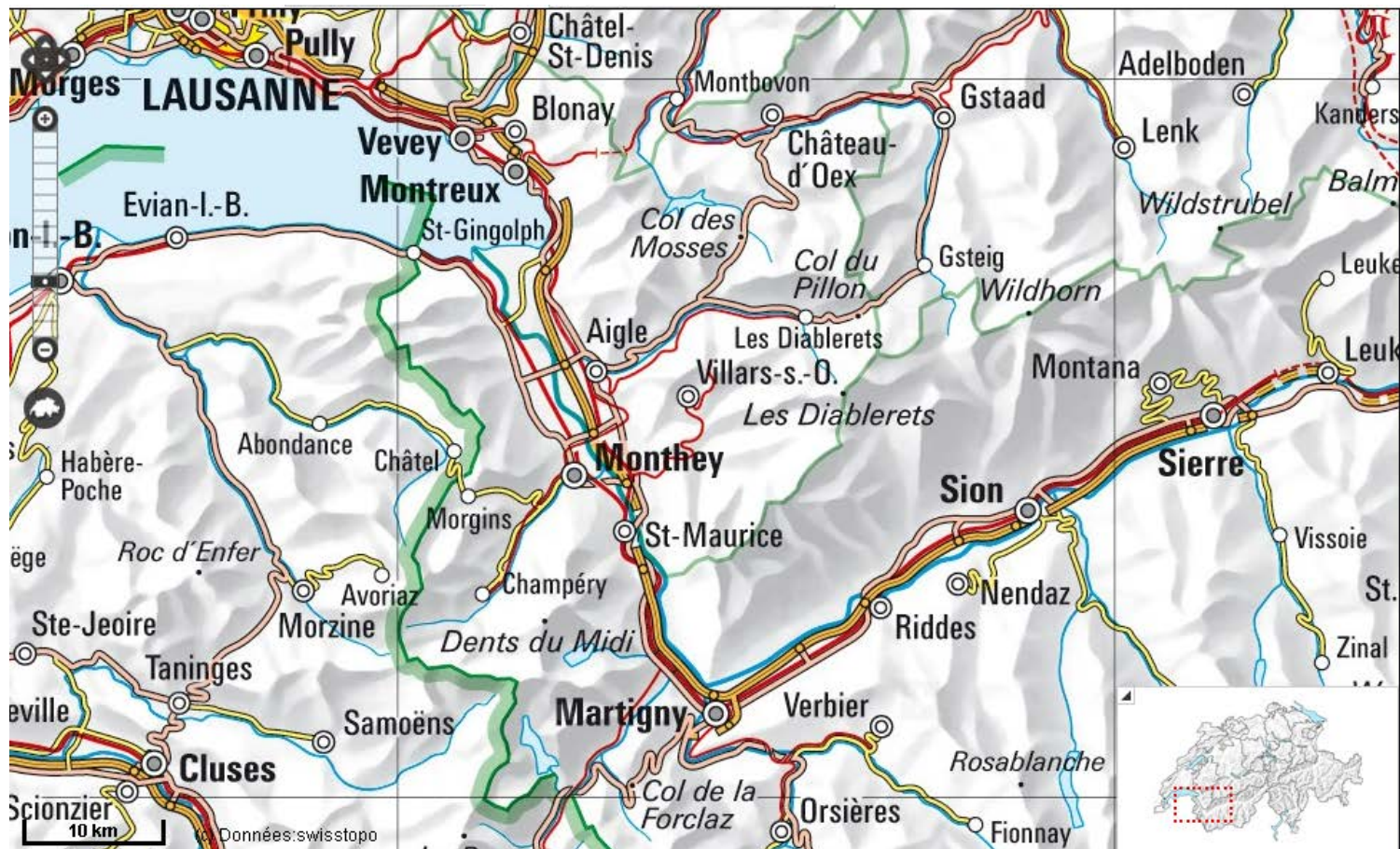
Final Conference

Bolzano
8th of March

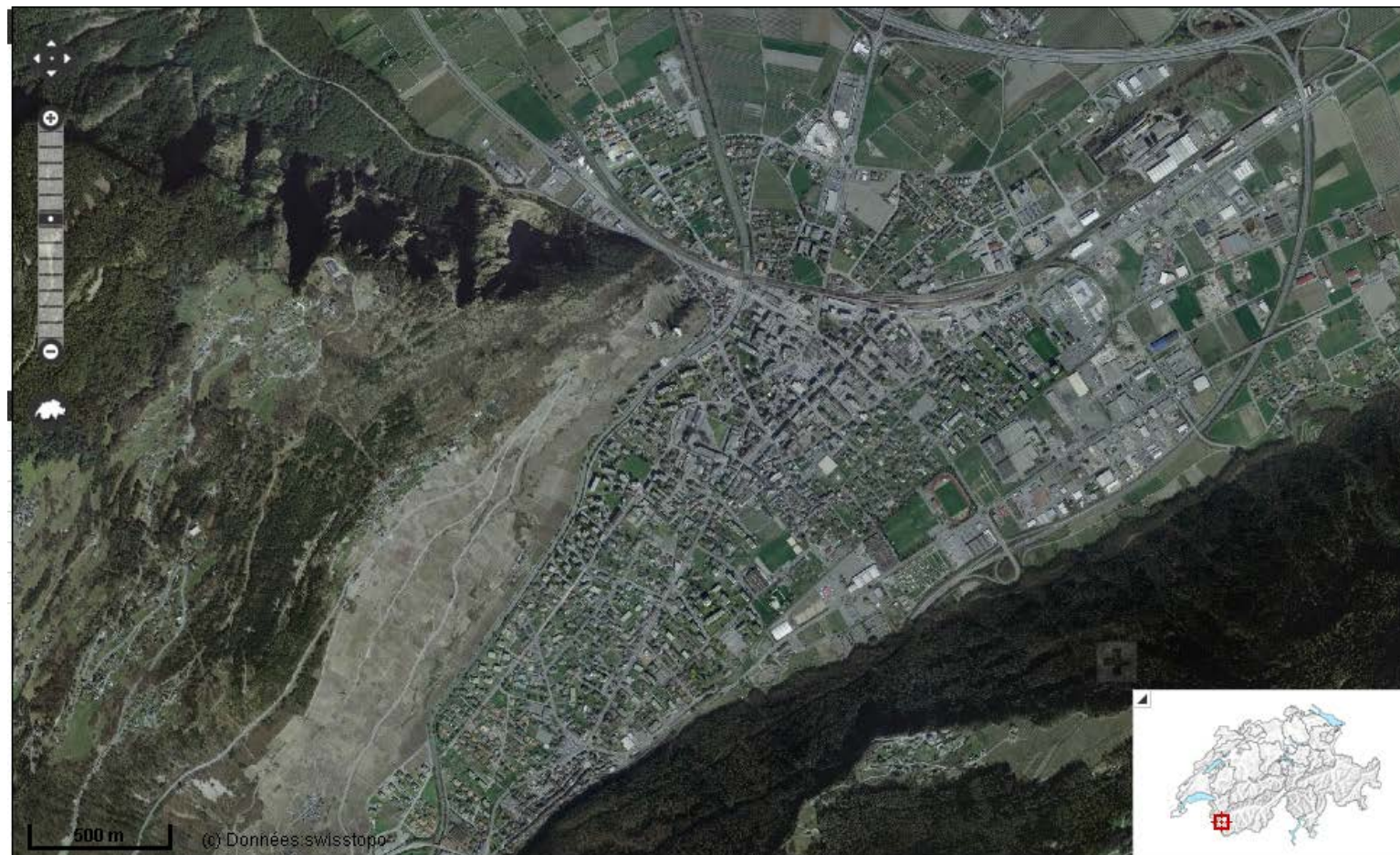
Nathalie Stumm
Institute for Tourism
HES-SO Valais/Wallis

Implementation of the CLD strategy

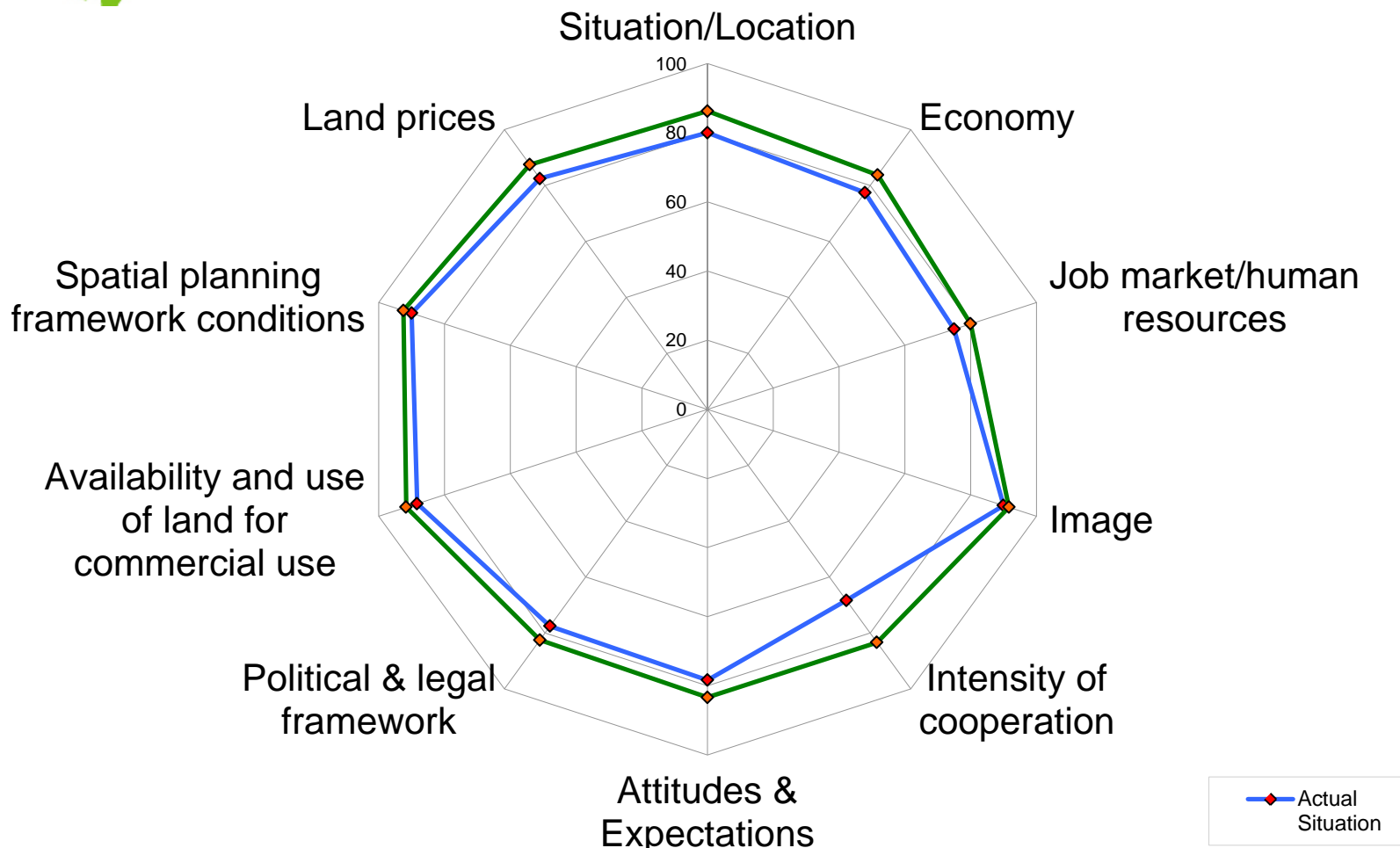
Presentation of the 3 pilot cities in Valais - Switzerland



Martigny



- 16,96 km²
- 16'700 inhabitants
- Exceptional natural setting
- Vibrant cultural life
- Extremely reliable rail and road networks
- Attractive tax incentives
- Attractive location solutions
- Local support of the economic task force of Martigny
- Telecommunications infrastructure at the cutting edge, with one of the world's densest system for high speed data transmission

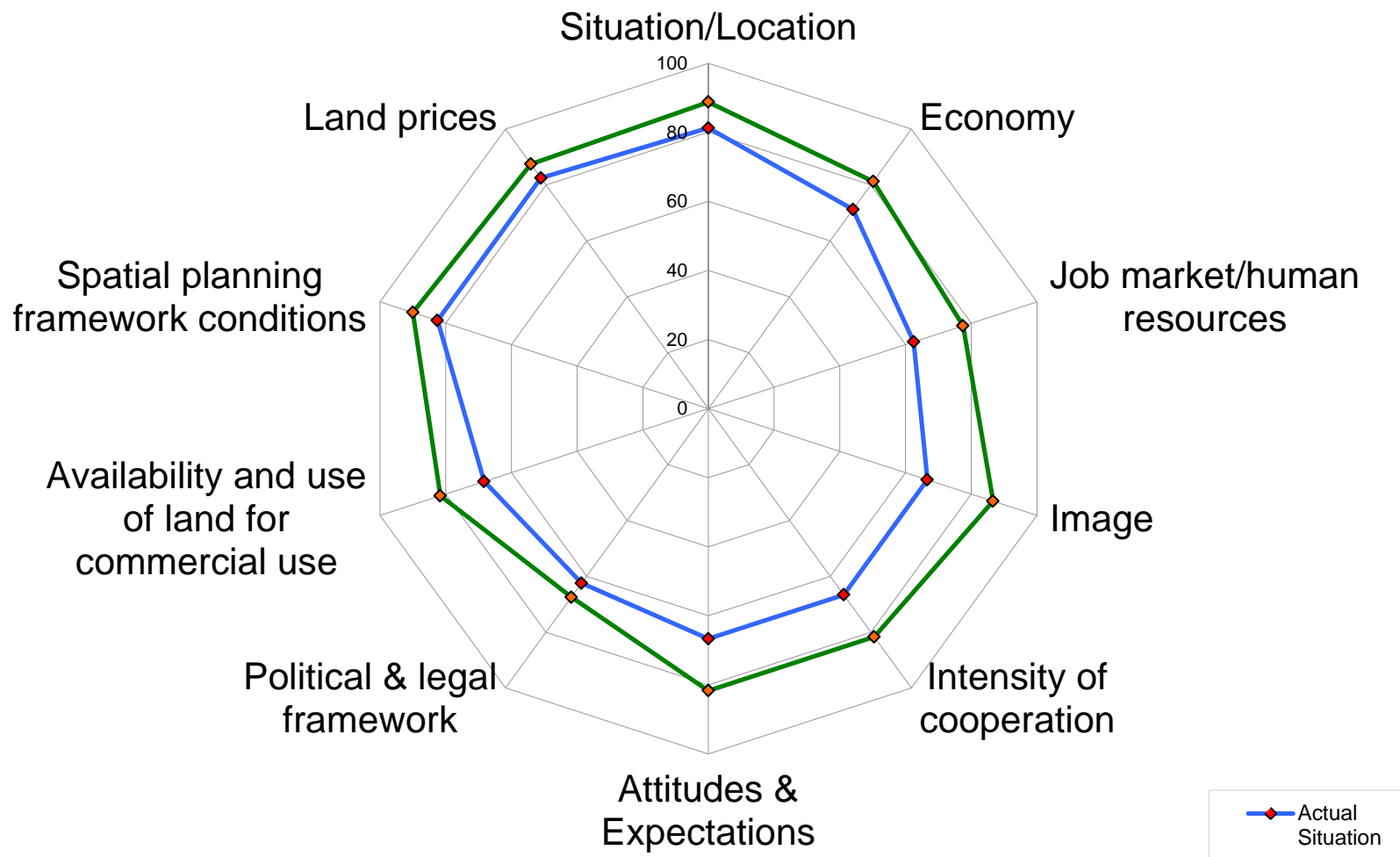


BSC for the town of Martigny

Sion

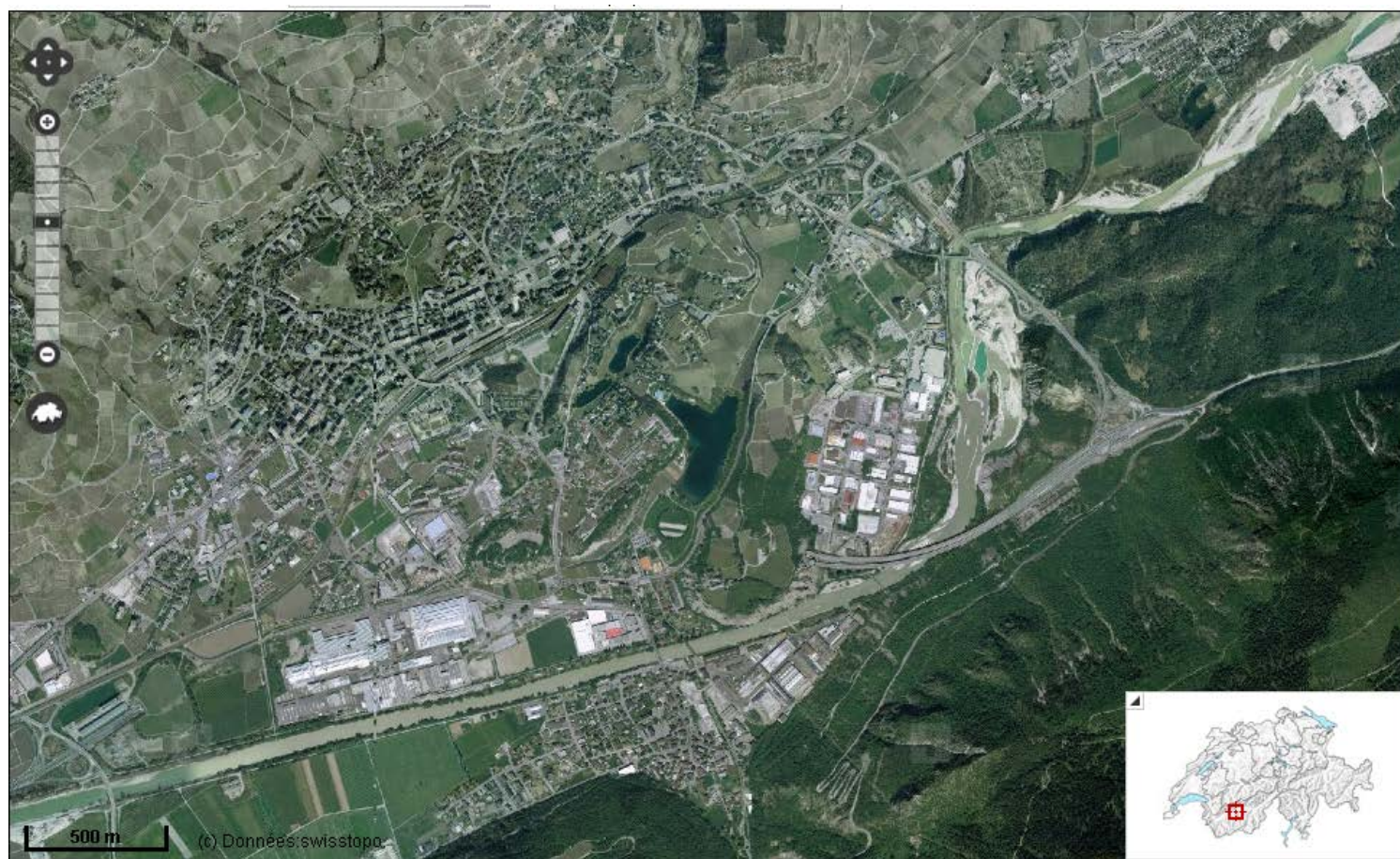


- 25,6 km²
- 30'092 inhabitants
- Proximity to the mountain resorts and many spas
- 420 hectares of vineyards
- « Sion terroir urbain »
- International festivals
- 18 hole golf course
- International airport of Sion
- Local support of the economic promotion of Sion
- Research centres and higher education : SUVA, IUKB, IRO, HES-SO Valais

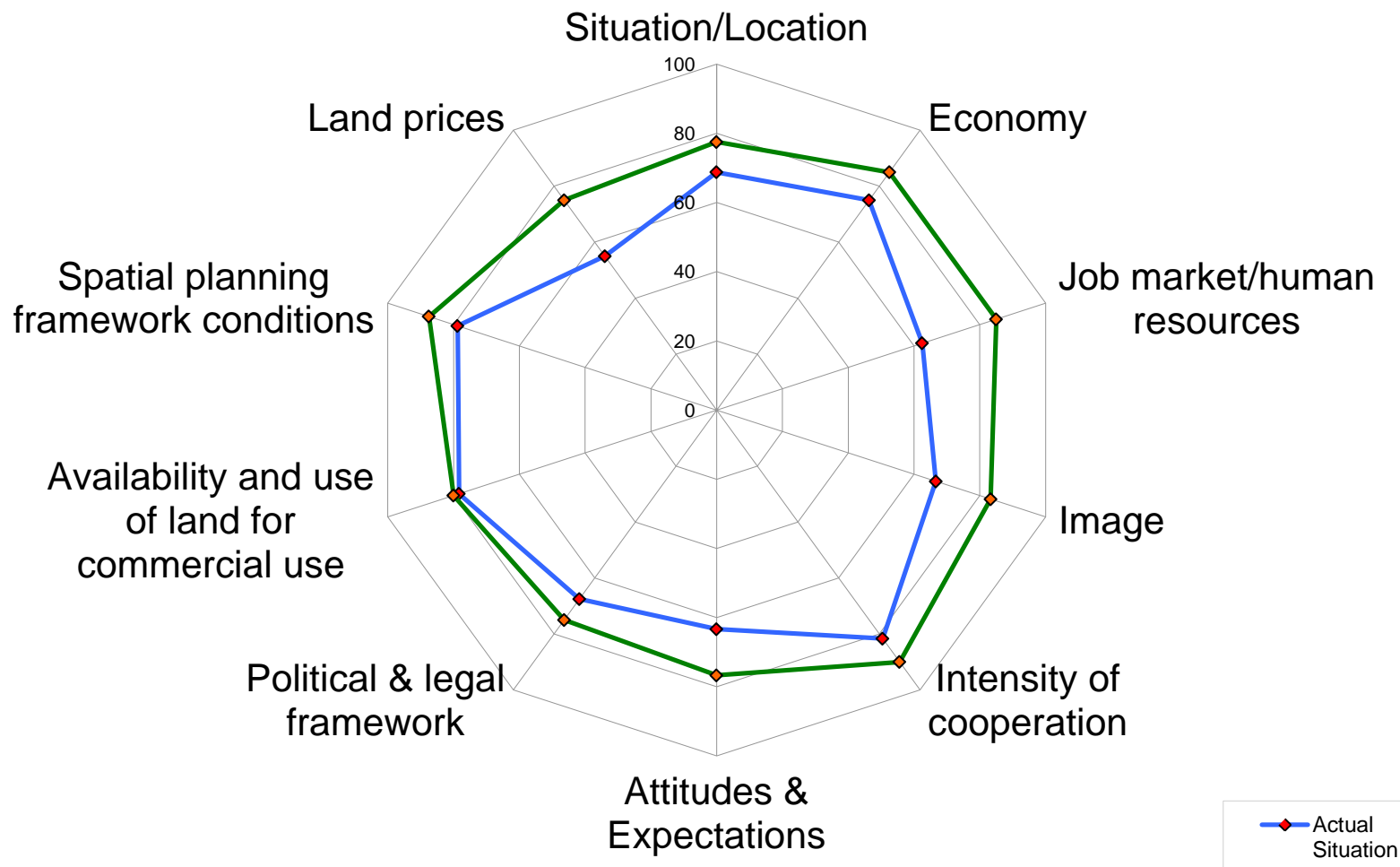


BSC for the town of Sion

Sierre



- 19km²
- 15'023 inhabitants
- Exceptional climate and environment in the Alps
- Rail services, road and air performance
- Centers of excellence: ICT, applied research and innovation, aluminum, training, tourism, wine
- Growing city - Important public and private investment
- Favorable conditions:
 - Production cost benefit (taxes, rents, wages)
 - Industrial and commercial sites in good locations, with development potential
- Simplified procedures and search through the one-stop shop of the economic promotion
- Town on the border of the french speaking and german speaking Valais



BSC for the town of Sierre

	Location profile	Inter-municipal cooperation	Commercial land use management
Challenges	<ul style="list-style-type: none"> • Optimize the consumption of energy • Develop the local valorization of co and under-products • Decrease the production of waste 	<ul style="list-style-type: none"> • Foster exchange between public authorities, industries and research institutes • Sensitize the political authorities to the concept of industrial ecology 	<ul style="list-style-type: none"> • Respect an integrated planning of the territory • Support a mix and a complementarity of activities within the industrial zones

Main challenges faced by the town of Sierre

Objective of implementation

Figure 1, Commitment of the "Antenne régionale du développement économique du Valais Romand"

Communicate, sensitize and train in industrial ecology



Figure 2, Objective of implementation of HES-SO

Strategy of implementation

Industrial ecology

- Support of businesses concerning the management of raw materials and energy
- Turning discharges into production factors
- Possible municipal initiatives
 - Analysis of material / energy flows
 - Establishment of working groups and networks

eCHO

Valais, source d'économie durable

1^{er} symposium international
d'écologie industrielle
performances environnementales
des entreprises et des territoires

JEUDI 19 & VENDREDI 20 JANVIER 2012

Aula François-Xavier Bagnoud HES-SO,
 Route du Rawyl 47, 1950 Sion - Valais (Suisse)

régionsvalaisromand

Hes-SO // VALAIS WALLIS
 Haute Ecole Spécialisée de Suisse occidentale
 Fachhochschule Westschweiz
 University of Applied Sciences
 Western Switzerland

Unil
 UNIL | Université de Lausanne

VILLE DE SION

VALAIS WALLIS

Haute Ecole Spécialisée
 de Suisse occidentale
 Fachhochschule Westschweiz
 University of Applied Sciences
 Western Switzerland

Alpine
 SPACE
 THIS PROJECT IS CO-FUNDED BY THE
 EUROPEAN REGIONAL DEVELOPMENT FUND
 Investing in your future