

BLS Business Location Südtirol – Alto Adige

Business Location Südtirol – Alto Adige (BLS)

BLS is South Tyrol's investment promotion agency that represents the region as a business location. BLS offers free services to local, national and international companies of all sizes.

Main Tasks:

- » **Comprehensive Services and Advice:** BLS gives advice about all relevant topics for businesses in South Tyrol, including taxes, law, subsidies, finances, public administration, etc.
- » **Site Selection:** BLS provides information about available commercial properties and assists with the choice of a site.
- » **One-Stop-Shop and Networking:** BLS brings companies together with key institutions and local partners.

Location Development

- » Improve basic economic conditions
- » Long-lasting settlement of companies from outside South Tyrol

Location Marketing

- » Proactive approach to positioning South Tyrol competitively
- » South Tyrol is being marketed both domestically and abroad (I, DE, AT, CH)



Safeguarding the Economic Future

- » Location-related support services for South Tyrolean companies
- » Resource utilization prior to new designation

Location Promotion

- » Contributions for acquisitions and development
- » Promotion of the economy

STEP

ABTEIBADIA AHRNTALVALLEAURINAALDEINALDINOALGUNDLAGUNDOAL TREI ANTERIVO ANDRIAN ANDRIANO AUERORABARBIANBARBIANO
BOZENBOLZANOBRANZOLLBRONZOLOBRENNERBRENNEROBRIXENBRESSANONEBRUNECKBRUNICOBURGSTALLPOSTALCORVARA
CORVARAINBADIAD EUTSCHNOFENNOVAPONENTEENNEBERG SANVIGILIODIMAREBBEALPLANDEMAREOEPPANAPPIANOFELDTHURNSVELTURNO
FRANZEN SFESTEFORTEZZAFREIENFELDCAMPODITRENSGAISGARGAZONGARGAZZONEGLURNSGLORENZAGRAUNCURONVENOSTAGSIES
CASIESHAFLINGAVELENGOINNICHENSANCANDIDOJENESIENSANGENESIOKALTERNCALDAROKARNEIDCORNE DOKASTELBELL-TSCHARS
CASTELBELLO-CIARDESKASTELRUTHCASTELROTTOKIENSCHIENESKLAUSENCHIUSAKUENS CAINESKURTATSCHCORTACCIAKURTINIGCORTINALAAS
LASALAJENLAIONLANALATSCHLACESLAUREINLAUREGNOLEIFERSLAIVESLÜSENLUSONMALSMALLESMARGREIDMAGRÈMARLINGMARLENGO
MARTELLMARTELLOMERANMERANOMÖLTENMELTINAMONTANMONTAGNAMOOMOSOMÜHLBACHRIODIPUSTERIAMÜHLWALDSELVADEIMOLININALS
NALLESNATURNSNATURNONATZ-SCHABSNAZ-SCIAVESNEUMARKTEGNANI EDERDORFVILLABASSAOLANGVALDAORAPARTSCHINSPARCINESPERCHA
PERCAPFALZENFALZESPFATTENVADENAPFITSCHVALDIVIZZEPLAUSPRADAMSTILFSEJRJOCHPRATOALLOSTELVIOPRAGSBRAIESPRETTAUPREDOIPROVEISPROVES
RASEN-ANTHÖLZRASUN-ANTERSELVARATSCHINGSRACINESRIFFIANRIFIANORITTENRENONRODENECKRODENGOSALURNSALORNOSANDINTAUFRS
CAMPOTURESST.CHRISTINASANTACRISTINASANTACHRISTINAST.LEONHARDSANLEONARDOST.LORENZENSANLORENZOST.MARTININPASSEIER
SANMARTINOINPASSIRIAST.MARTININTHURNSANMARTINOINBADIASANMARTINDETORST.PANKRAZZSANPANCRAZIOST.ULRICHORTISEI
URTIJËISARNTALSARENTINOSCHENNASCHENASCHLANDERSSILANDROSCHLUDERNSSLUDERNOSCHNALSSENALESSEXTENSESTOSTERZING
VIPITENOSTILFSSTELVIOTAUFERSIMMÜNSTERTALTUBRETERENTENTERENTOTERLANTERLANOTIERSTIRESDORFTIROLTIROLOTISENSTESIMO
TOBLACHDOBBIA COTRAMINTERMENOTRUDENTRODENATSCHERMSCERMESULTENULTIMOUNSERELIEBEFRAUIMWALDE-ST.FELIX
SENALE-SANFELICEVAHRNVARNAVILLANDERSVILLANDROVILLNÖSSFUNESVINTLVANDOI ESVÖLSAMSCHLERNFIÈALLOSCILIARVÖRANVERANO
WAIDBRUCKPONTEGARDENAWELSBERG-TAISTENMONGUELFO-TESIDOWELSCHNOFENNOVALEVANTEWENGENLAVALLELAVALWOLKENSTEINSELVASÉLVA

Standortentwicklungsprojekt | Progetto di sviluppo della localizzazione



Südtiroler
Gemeindenverband
Genossenschaft

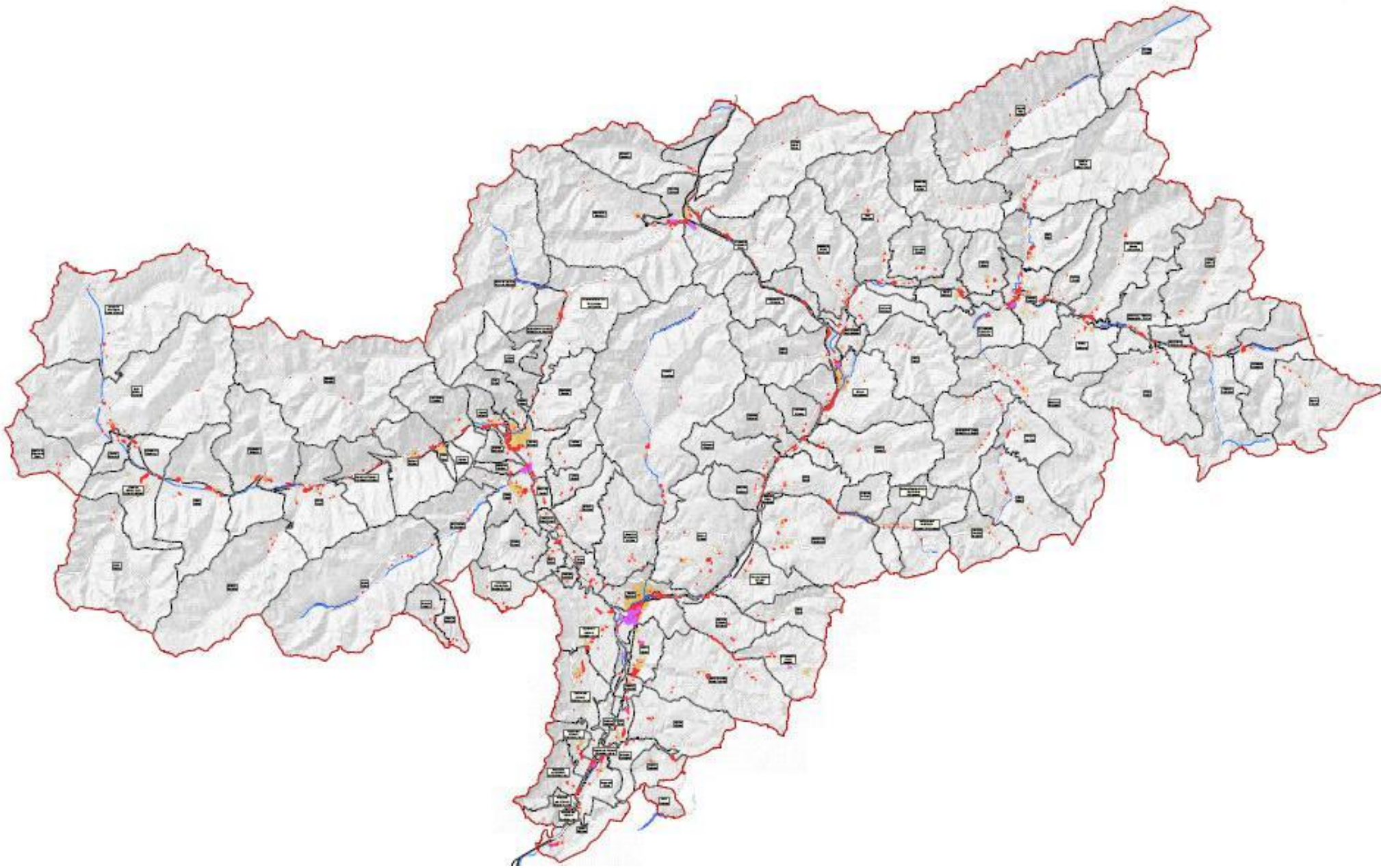
Consorzio dei Comuni
della Provincia di Bolzano
Società Cooperativa

AUTONOME
PROVINZ
BOZEN
SÜDTIROL



PROVINCIA
AUTONOMA
DI BOLZANO
ALTO ADIGE

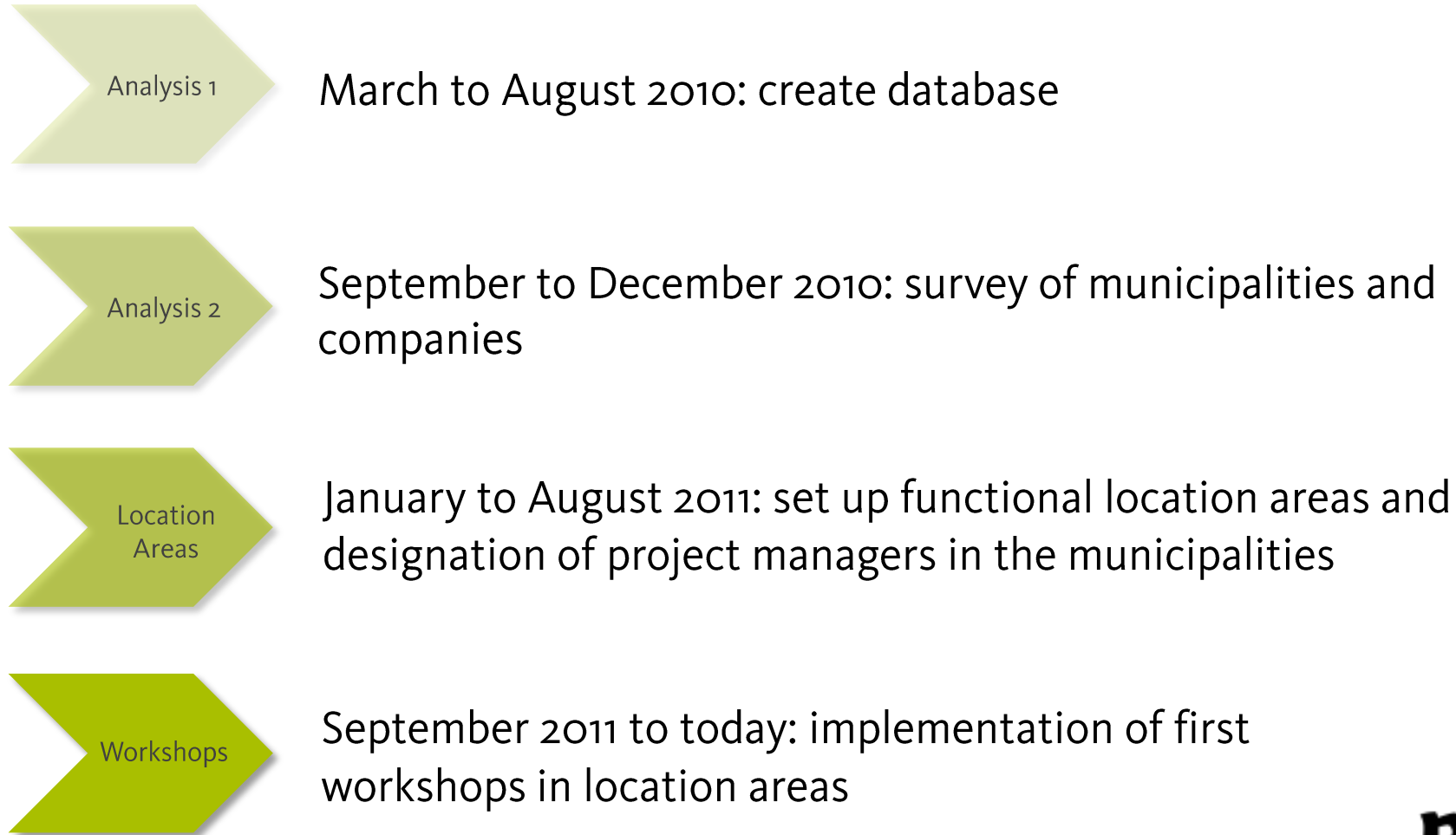
BLS.
Südtirol - Alto Adige



STEP_Goals

- » Long-term strengthening of the municipalities in the business location of South Tyrol
- » Inter-municipal cooperation
 - ... through strategic positioning of the location
 - ... through the management, development and marketing of commercial zones

STEP_Timeframe



Standorträume



Menü

- [STEP](#)
- [Steuergruppe](#)
- [Aktuelles](#)
- [Menschen und Meinungen](#)
- [Pressemitteilungen](#)
- [Pressedippings](#)

Standorträume

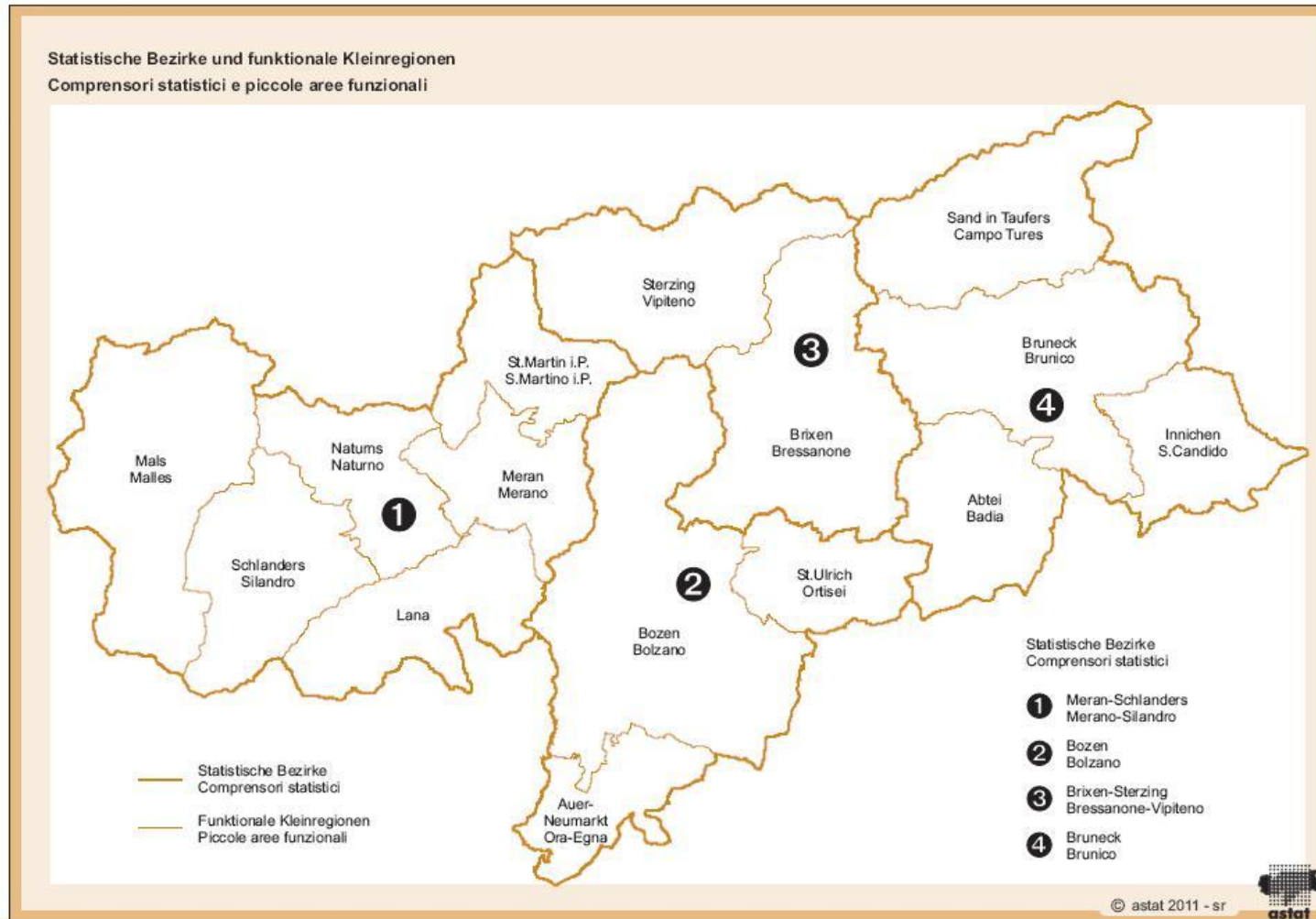


Newsletter

- [Aktuelle Ausgabe](#)
- [Anmeldung Newsletter](#)
- [Abmeldung Newsletter](#)

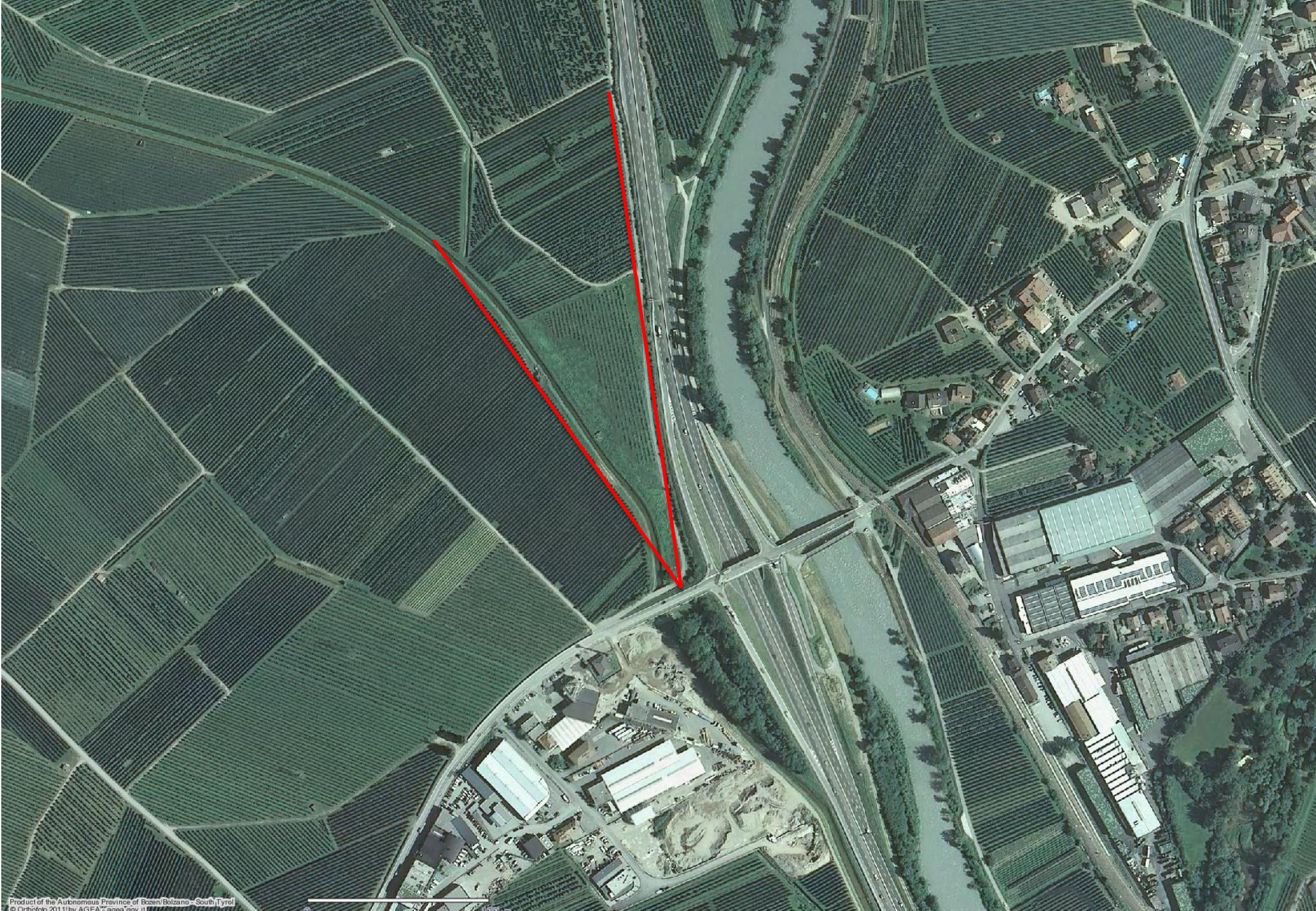
Ihre Ansprechpartner

Small Functional Regions





Workshops: Interaction with Municipalities



Comparison: Greater Bolzano (Bozen) in the 1950s – Today



Thank you for your attention!

www.bls.info